



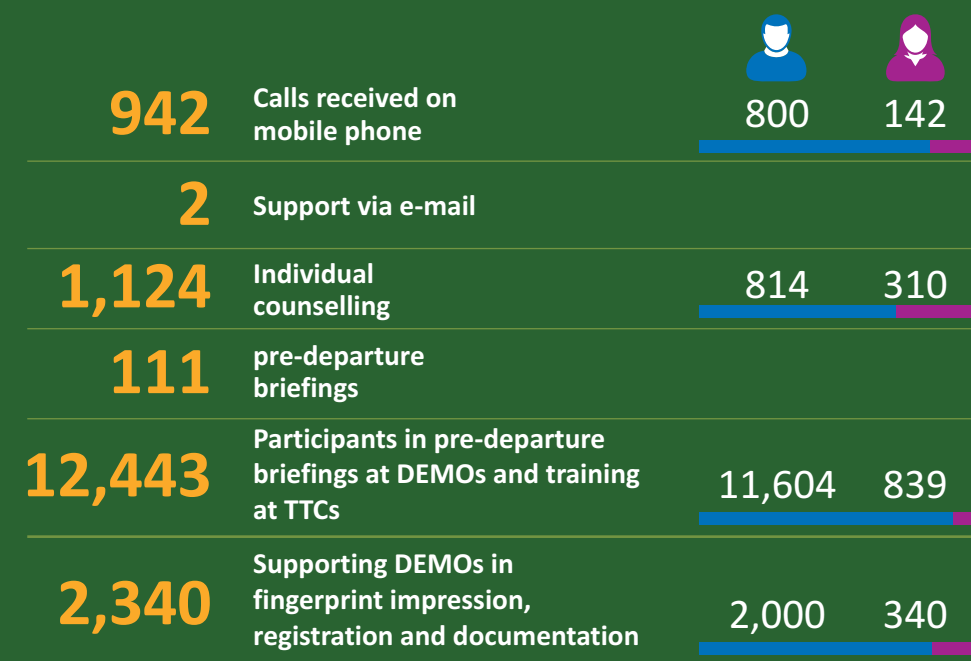
# MRC Bangladesh Activities

April to June 2022

Helping you make informed decisions on migration

অভিবাসী তথ্য কেন্দ্র MIGRANT RESOURCE CENTRE

## Counselling, guidance, pre-departure briefings and female screening



### Top 3 questions from phone and face to face counselling

1. What is the process to go to and work in Malaysia?
2. How will I get booster dose?
3. How to register in 'Ami Probashi App'?

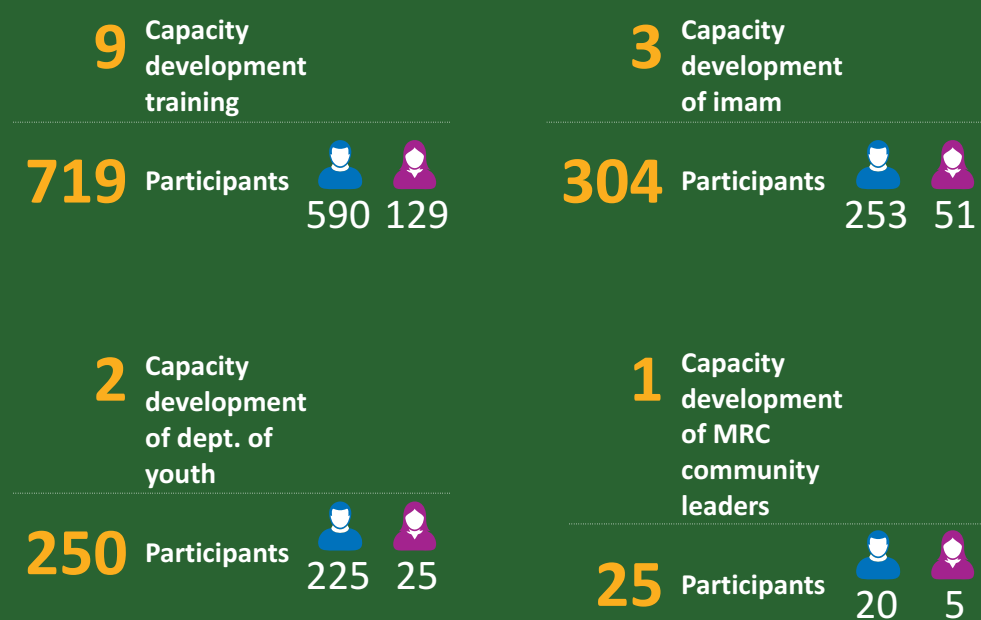
## Referral service

Total referred	1,857
Referred to PKB	64
Referred to BMET	281
Referred to DEMO	1,055
Referred to WEWB	27
Referred to TTC	265
Referred to Department of Immigration and Passport	62
Referred to Police Station	15
Referred to Land Office	4
Referred to Civil Surgeon's Office	40
Referred to 16263 (National health call centre)	18
Referred to 333 (National helpline)	12
Referred to 999 (National emergency number)	14

### Top 3 case referred from phone and face to face counselling

1. Where to avail of Pre-Departure Training (PDT)?
2. What is the procedure in taking loans from Probashi Kallyan Bank (PKB)?
3. What is the procedure for passport making application and renewal, and vaccination booster dose?

## Capacity development of campus ambassadors, imams, migrants, TTCs and DEMOs



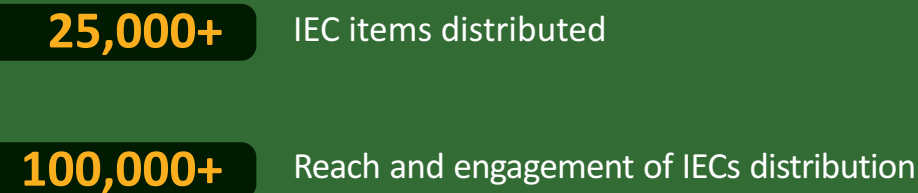
### Top location cities of followers



### Top location countries of followers



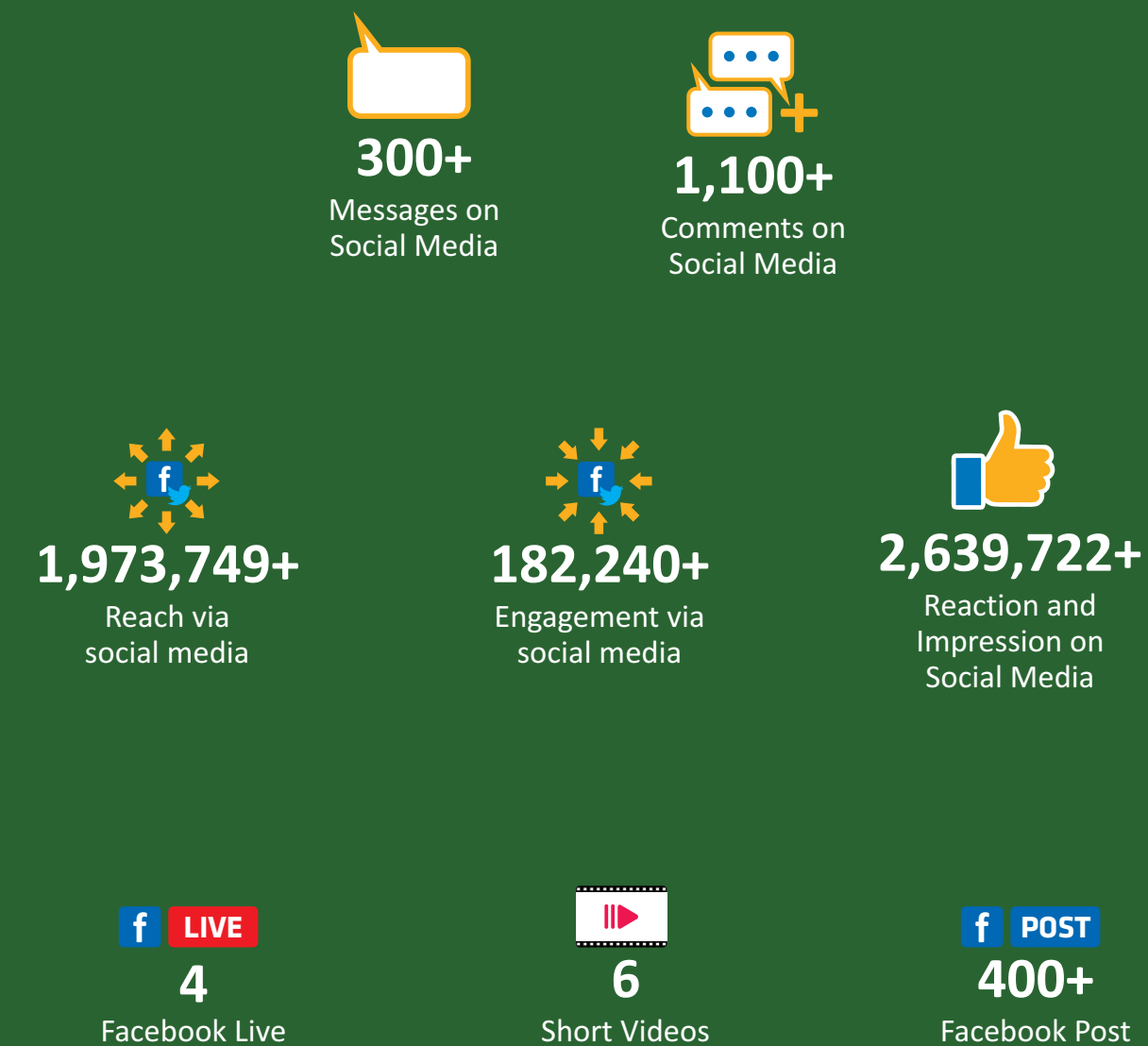
## Information materials



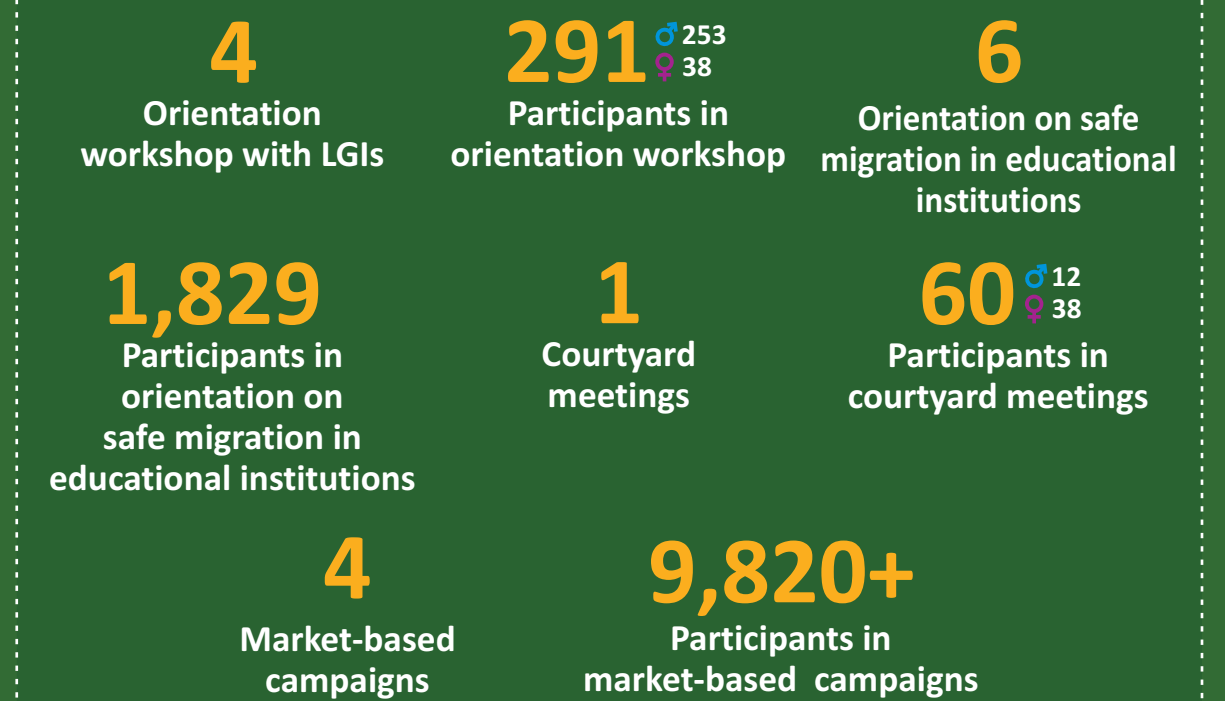
## Engagement with media



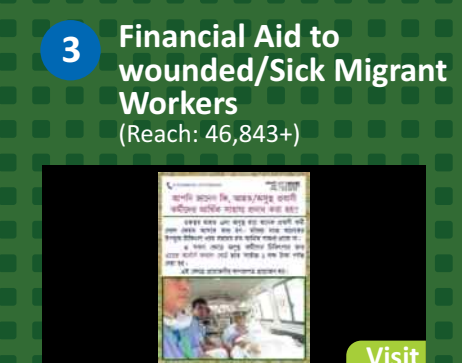
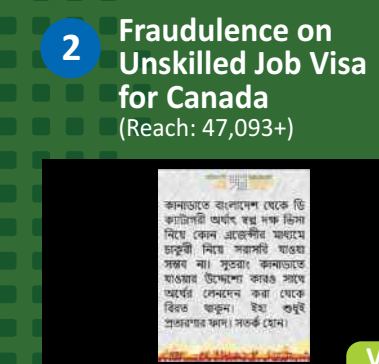
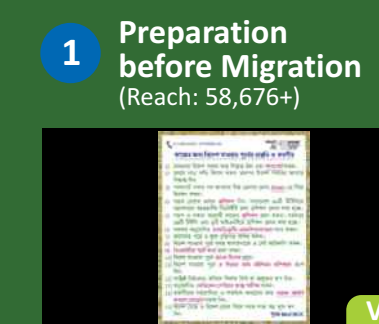
## Engagement through social media



## Community outreach and awareness sessions



### Top 3 posts on Facebook



### Top 3 videos



Supported by



Schweizerische Eidgenossenschaft  
Confédération suisse  
Confederazione Svizzera  
Confederaziun svizra  
Swiss Confederation  
Federal Department of Justice and Police FDJP  
State Secretariat for Migration SEM

Implemented by



facebook bangladeshmrc

www.mrc-bangladesh.org

info@mrc-bangladesh.org

+8801713086330, +8801730666936